



AWI ARCHITECTURAL WOODWORK INSTITUTE

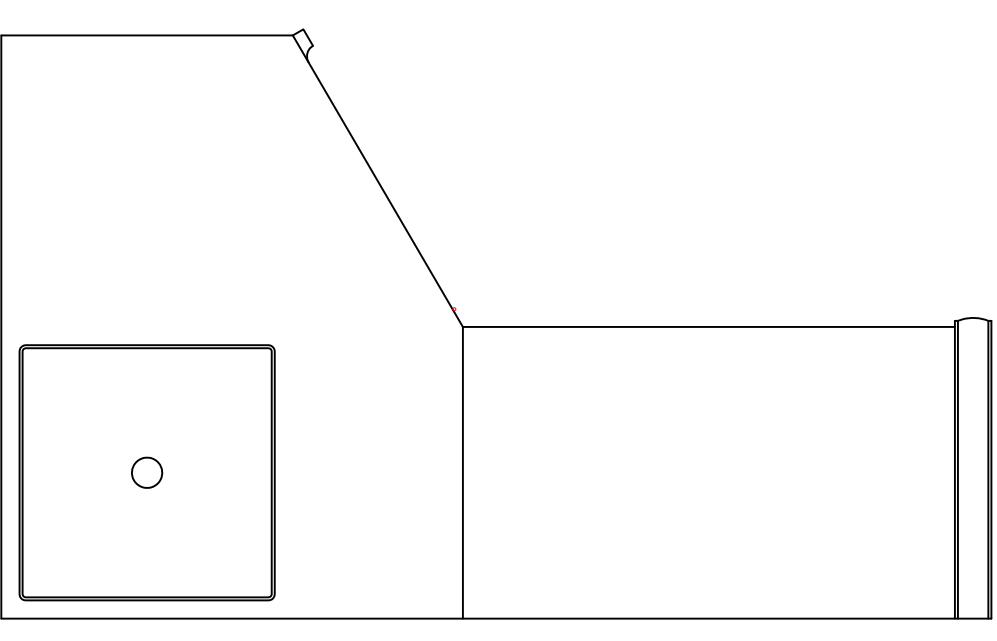
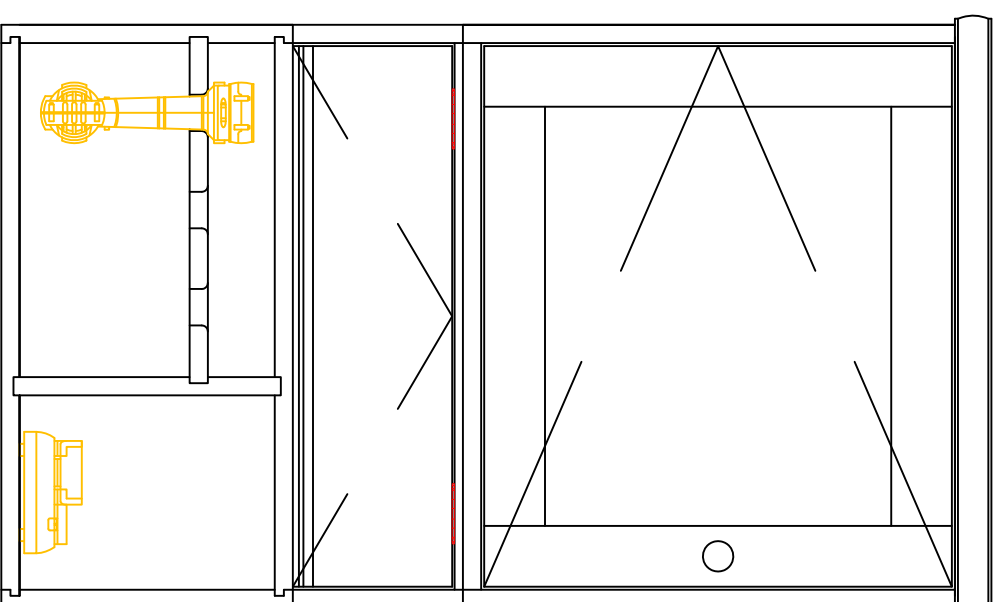
CONTRIBUTING AWI MANUFACTURING MEMBER COMPANIES

ALLEN MILLWORK CO. - WICHITA, KS
ROWLAND WOODWORKING, INC. - HIGHPOINT, NC
TECHNIQUE MANUFACTURING, INC. - HUTCHINSON, KS
VOLPE MILLWORK, INC. - CLEVELAND, OH
RIVERSIDE ARCHITECTURAL MILLWORK - CINCINNATI, OH
LOUISVILLE LUMBER & MILLWORK - LOUISVILLE, KY
LEININGER CABINET & WOODWORKING - LEXINGTON, KY

THE FOLLOWING COMPANIES PROVIDED SERVICES, EQUIPMENT, AND PRODUCTS FOR THIS CONTEST

SAW STOP
RICHELIEU COMPANY - INDIANAPOLIS, IN
FLEXIBLE MATERIALS - JEFFERSONVILLE, IN
BLUM - KANSAS CITY, KS
STAR MOULDING & TRIM COMPANY - BEDFORD PARK, IL
AMERICAN PACKAGING CORP. - HUTCHINSON, KS
DEWALT POWER TOOLS
PORTER-CABLE POWER TOOLS
IRWIN INDUSTRIAL TOOLS
EDWARD B MUELLER COMPANY - CINCINNATI, OH
STILES MACHINERY - GRAND RAPIDS, MI
WOODWORK CAREER ALLIANCE OF NORTH AMERICA,
www.woodworkcareer.org
OLON INDUSTRIES, WASHINGTON, IN
HAFELE HARDWARE
RUGBY ARCHITECTURAL BUILDING PRODUCTS, KERNERSVILLE, NC
ROY'S WOOD PRODUCTS, LUGOFF, SC
PURPOSEFUL DESIGN - INDIANAPOLIS, IN

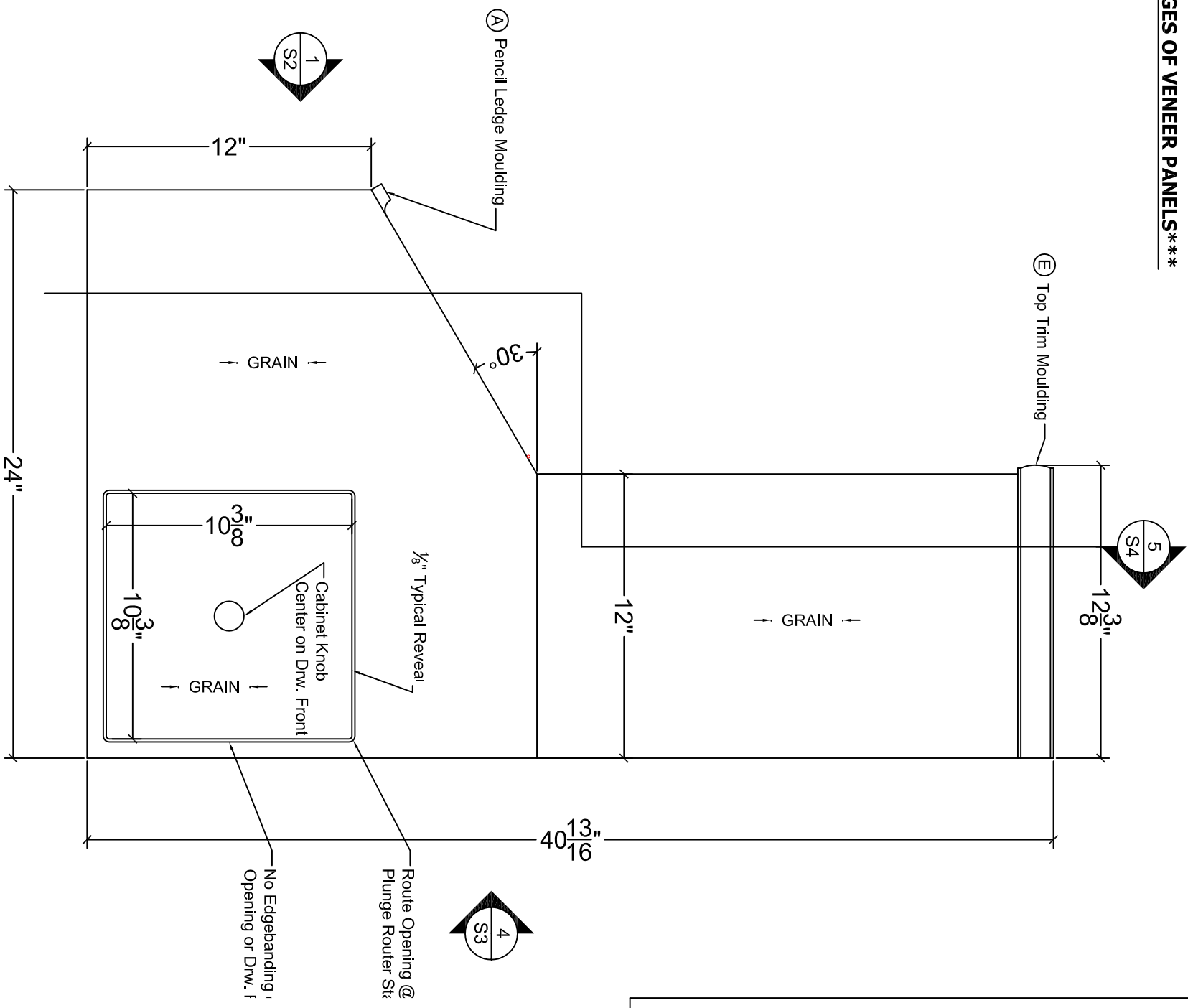
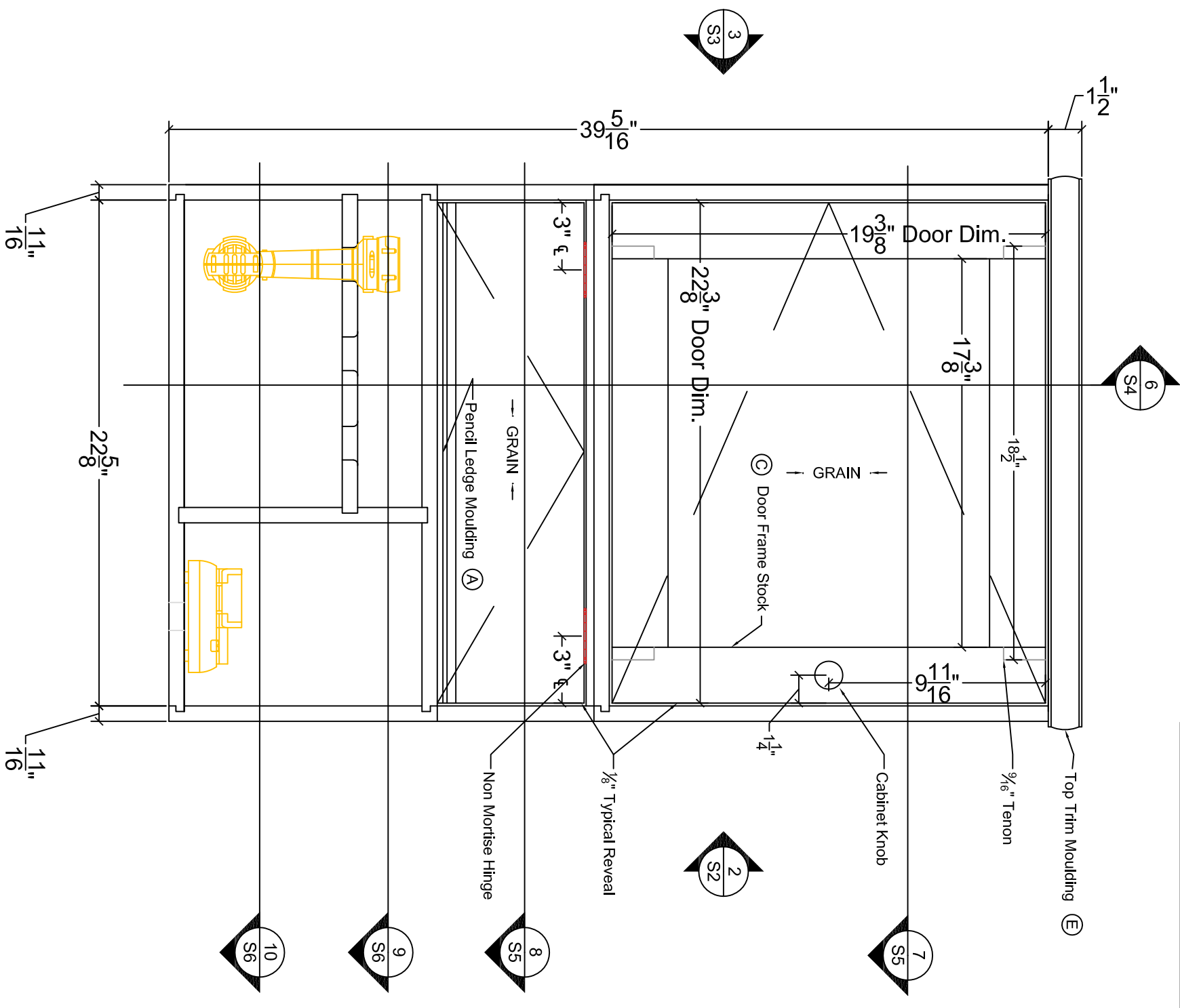
CONTESTANT # _____



2018 SkillsUSA NLSC

DATE: JUNE 2018 SHEET NO: S1
DRAWN BY: RKG SCALE: NA
TITLE: TOOL CABINET

*** EDGE BAND ALL EXPOSED EDGES OF VENEER PANELS ***



FRONT ELEVATION

RIGHT SIDE ELEVATION

2" = 1'-0"

2" = 1'-0"

1

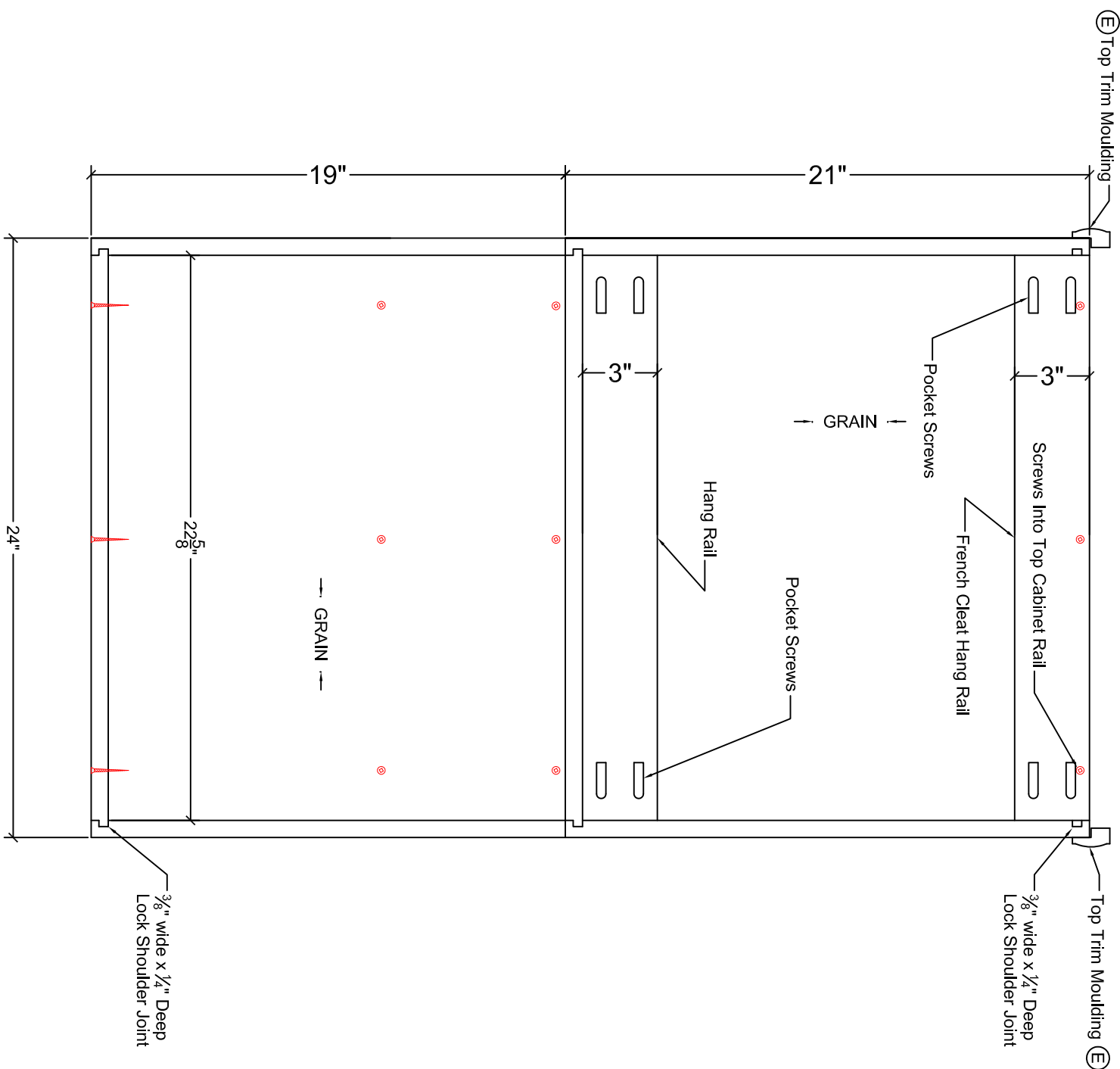
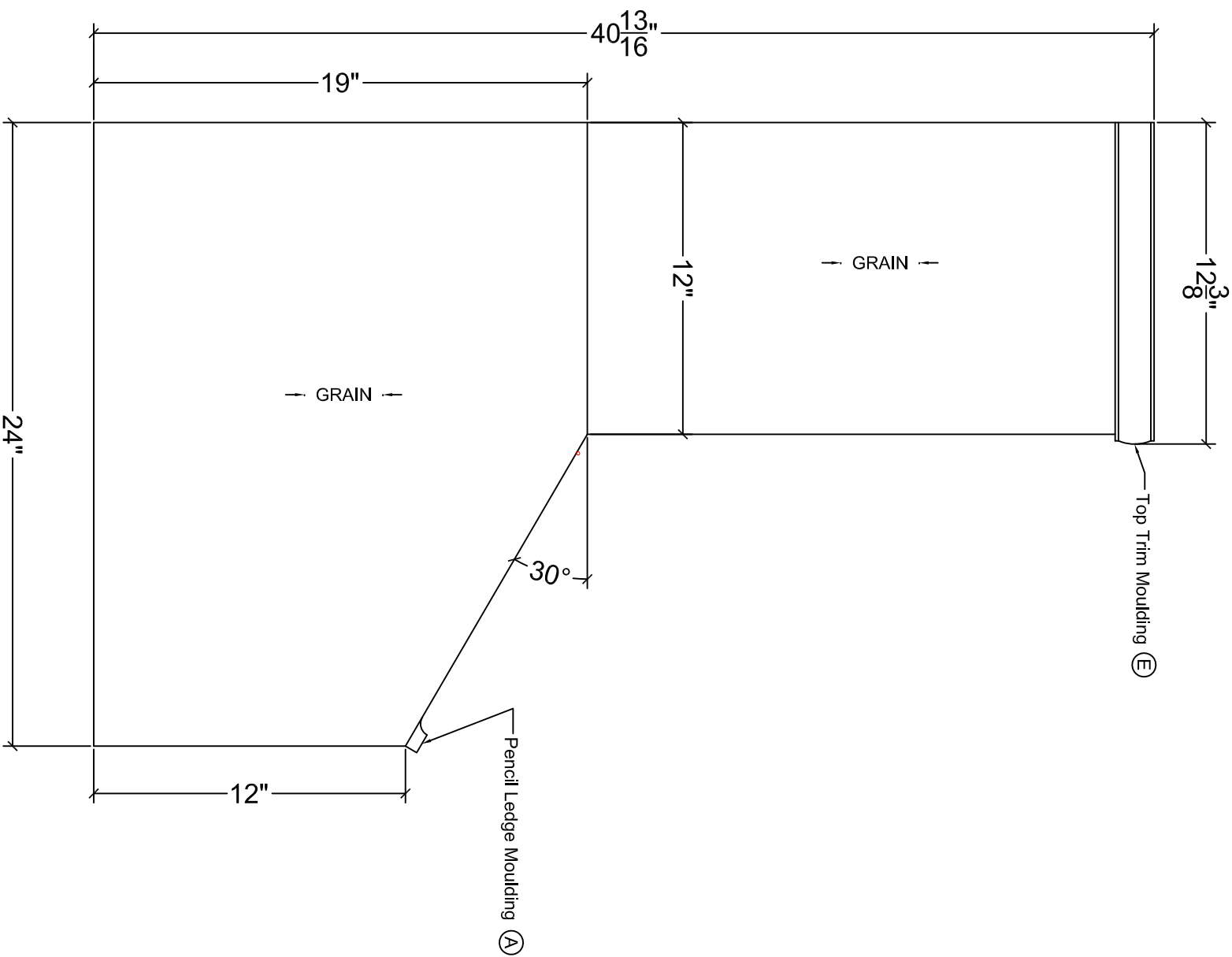
2

2018 SkillsUSA NLSC

DATE: JUNE 2018	SHEET NO: S2
DRAWN BY: RKG	SCALE: 3" = 1'-0"
TITLE: TOOL CABINET	



*** EDGE BAND ALL EXPOSED EDGES OF VENEER PANELS ***

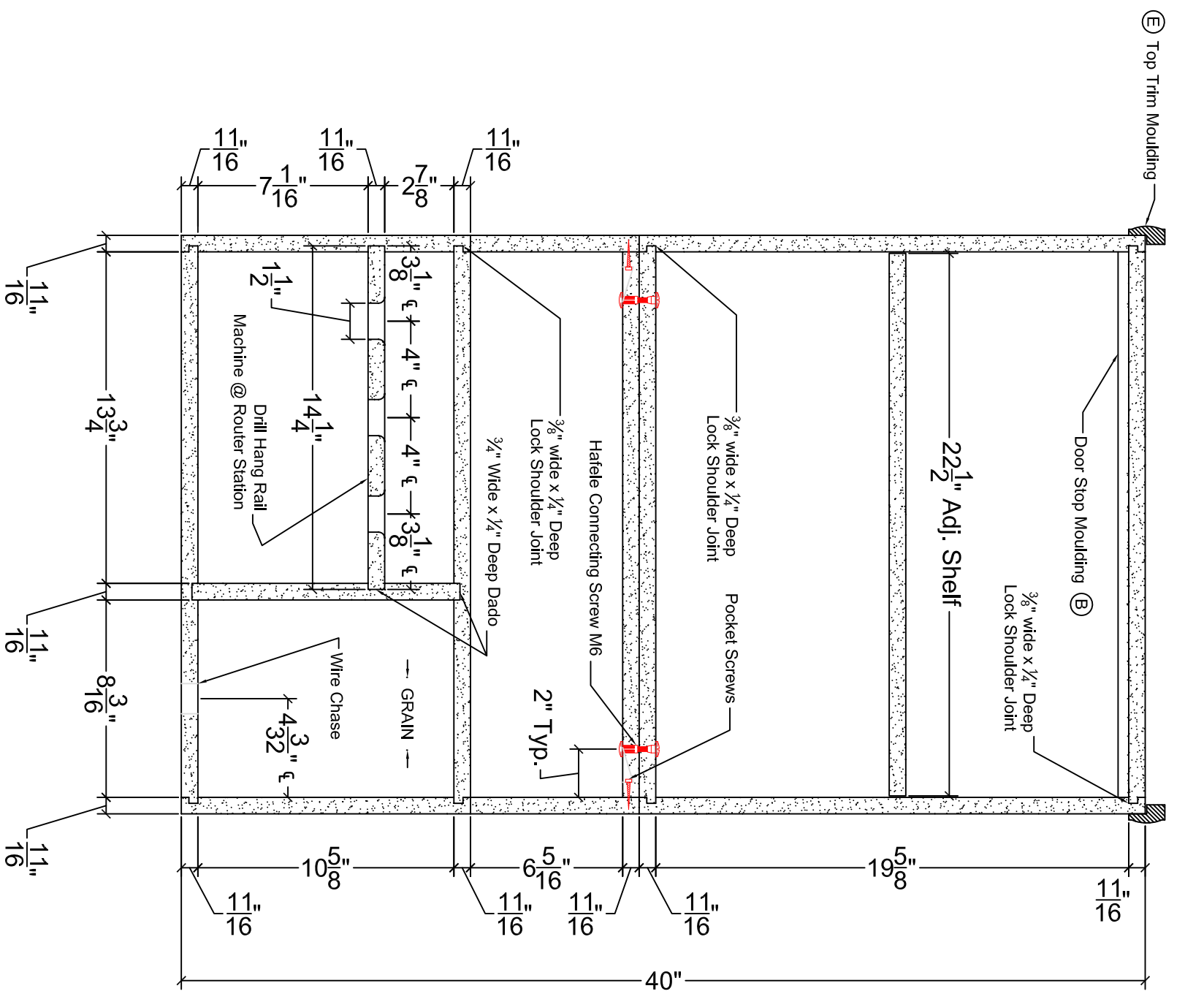


2018 SkillsUSA NLSC

DATE: JUNE 2018	SHEET NO: S3
DRAWN BY: RKG	SCALE: 3" = 1'-0"
TITLE: TOOL CABINET	



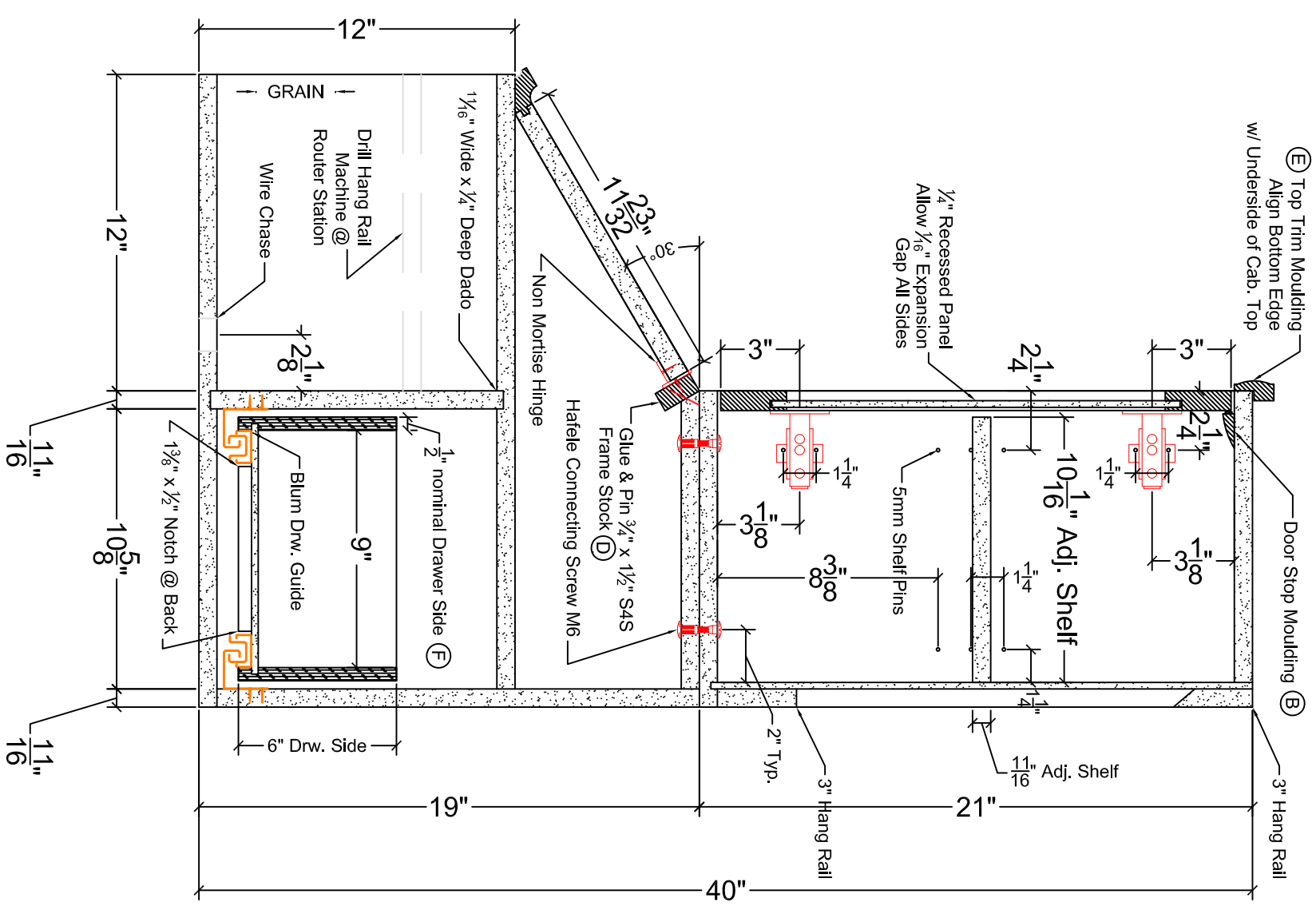
*** EDGE BAND ALL EXPOSED EDGES OF VENEER PANELS ***



VERTICAL SECTION FRONT

2" = 1'-0"

5



VERTICAL SECTION RIGHT

2" = 1'-0"

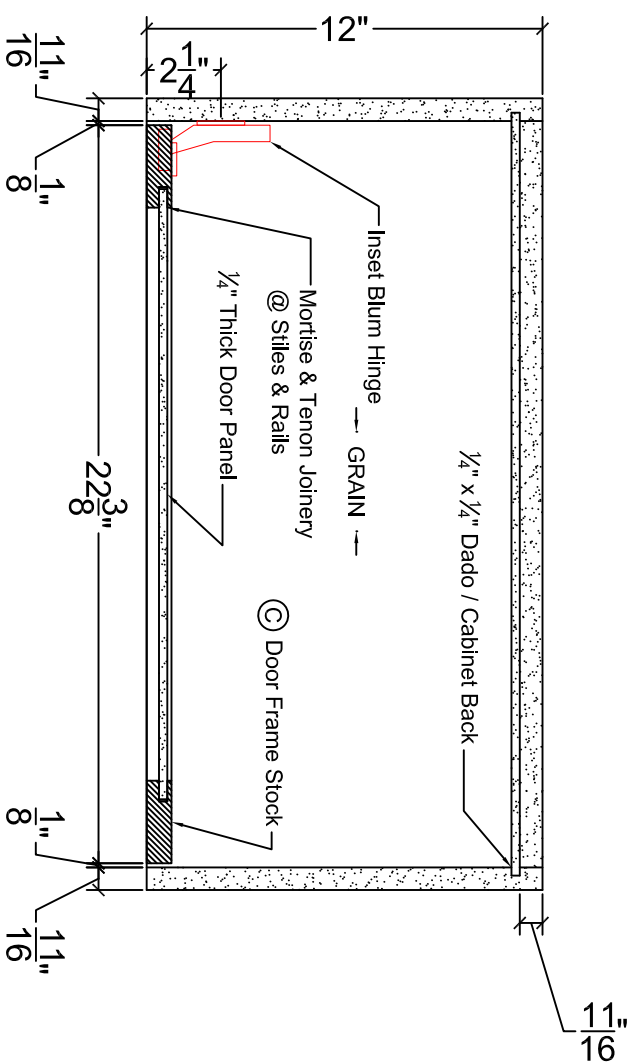
6

2018 SkillsUSA NLSC

DATE: JUNE 2018	SHEET NO: S4
DRAWN BY: RKG	SCALE: 3" = 1'-0"
TITLE: TOOL CABINET	



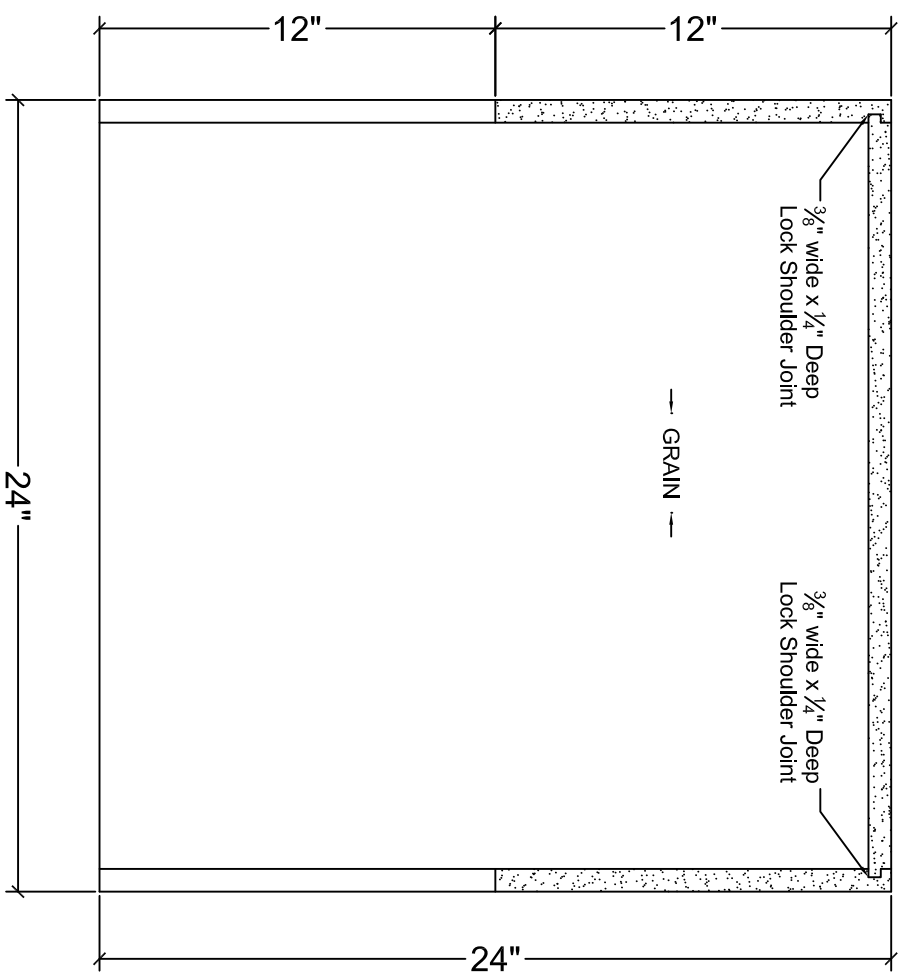
EDGE BAND ALL EXPOSED EDGES OF VENEER PANELS



HORIZONTAL SECTION

2" = 1'-0"

7



HORIZONTAL SECTION

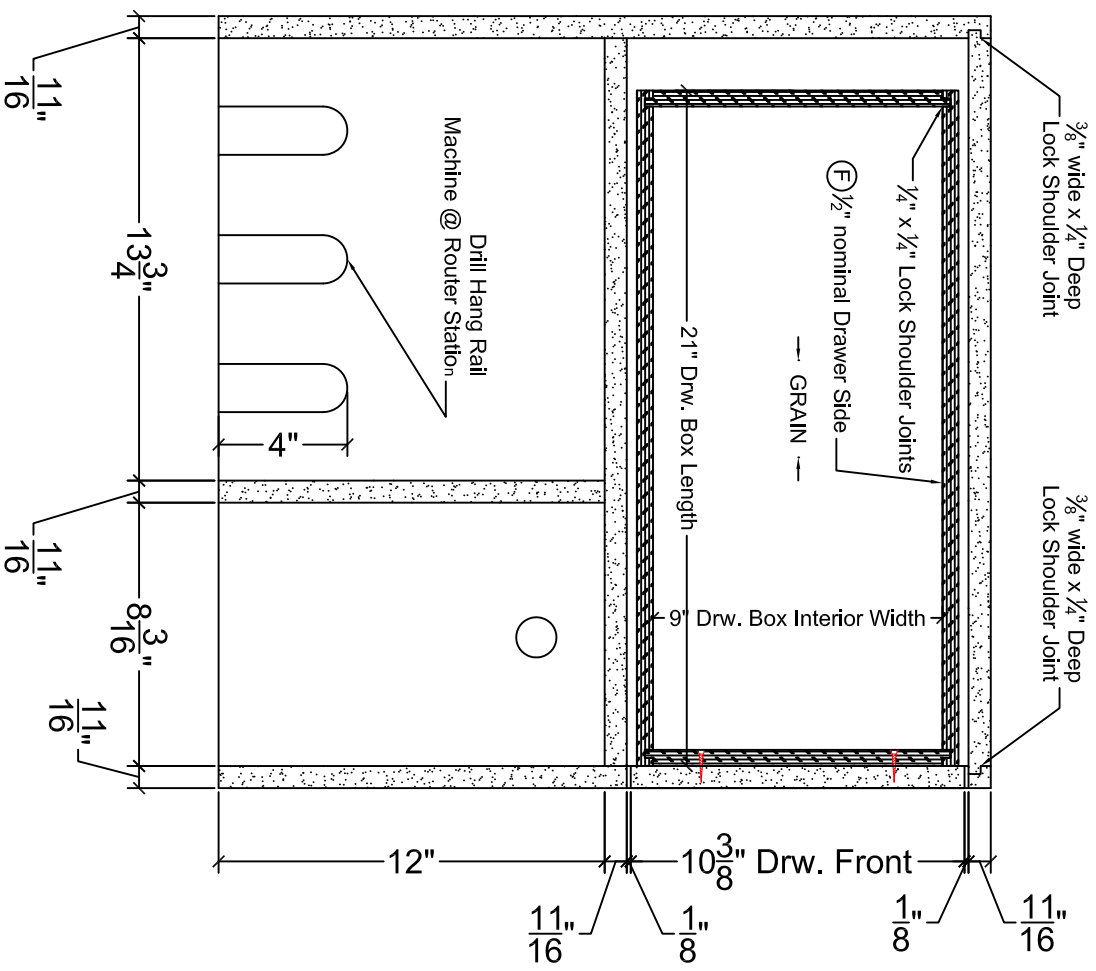
2" = 1'-0"

8

2018 SkillsUSA NLSC

DATE: JUNE 2018	SHEET NO: S5
DRAWN BY: RKG	SCALE: 3" = 1'-0"
TITLE: TOOL CABINET	

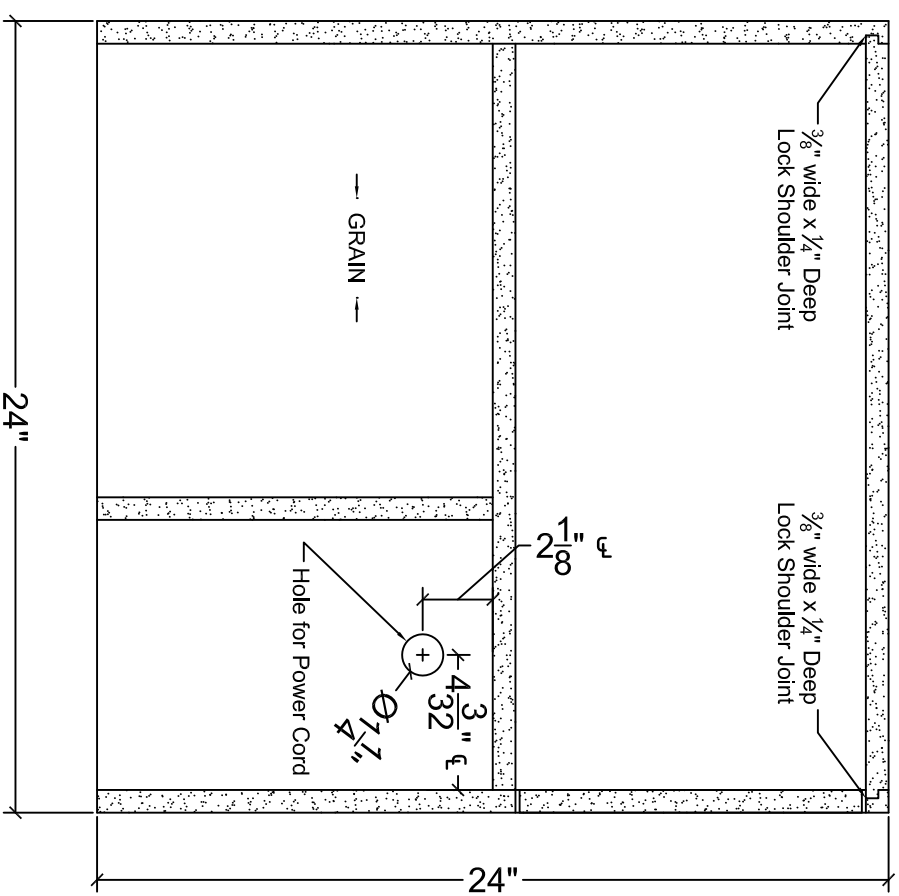




HORIZONTAL SECTION

2" = 1'-0"

9



HORIZONTAL SECTION

2" = 1'-0"

10

**NOTE: Drill
Wire Chase @
Grommet
Station**

2018 SkillsUSA NLSC

DATE: JUNE 2018

SHEET NO: S6

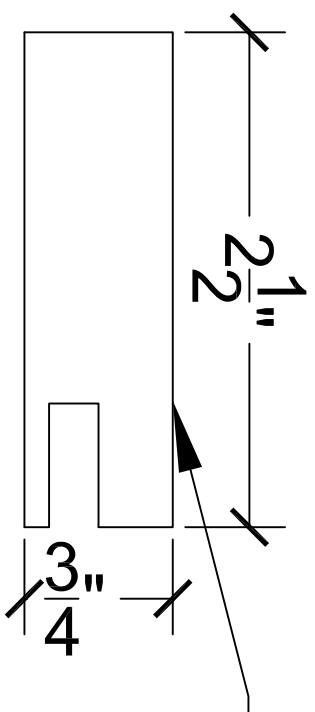
DRAWN BY: RKG

SCALE: 3" = 1'-0"

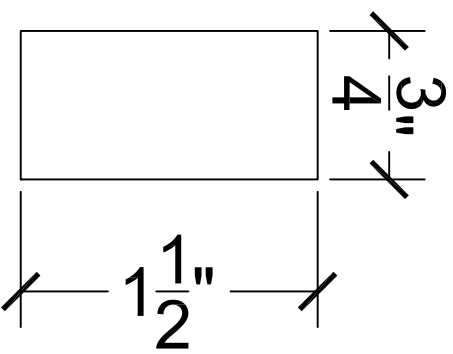
TITLE: TOOL CABINET



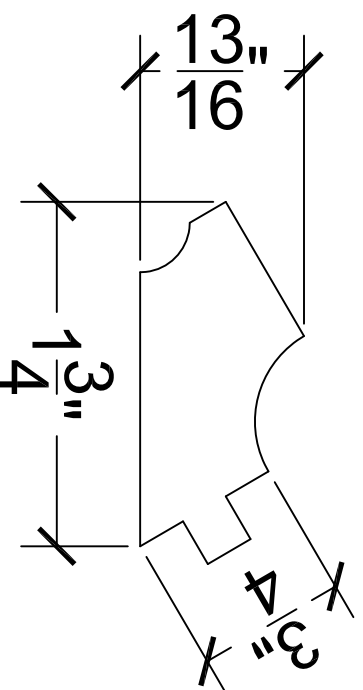
FACE



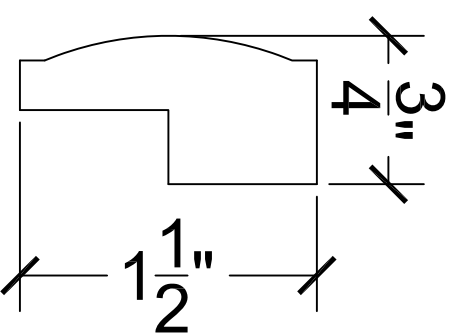
-C- DOOR FRAME STOCK
1/4" X 1/4" GROOVE CENTERED



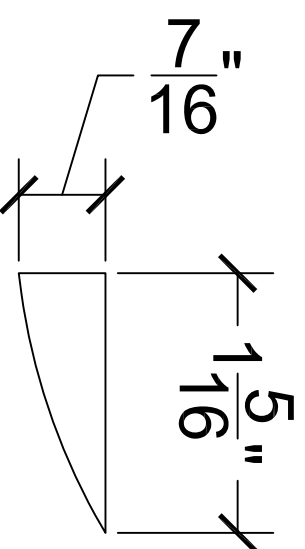
-D- S4S FRAME STOCK



-A- PENCIL LEDGE
FINGER PULL
MOULDING
1/4" X 1/4" TENON

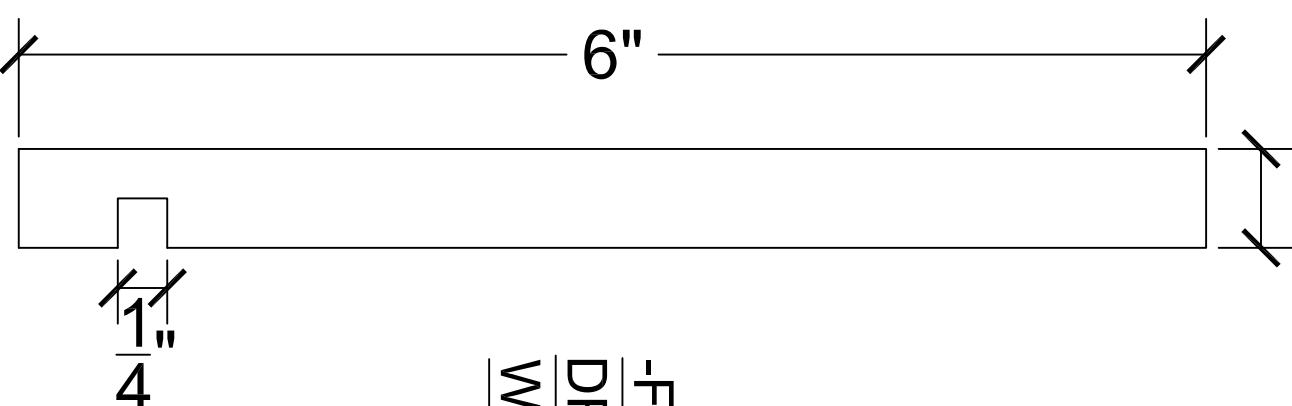


-E- PANEL MOULD
3/8" X 3/4" RABBET



-B- DOOR STOP

1/2" NOMINAL DIMENSION



-F- RUSSIAN BIRCH
DRAWER SIDE
W/GROOVE PRE-CUT

MOULDING DETAIL SECTIONS

1"=1'-0"

12

2018 SkillsUSA NLSC

DATE: JUNE 2018	SHEET NO: S8
DRAWN BY: RKG	SCALE: 3"=1'-0"
TITLE: TOOL CABINET	

MATERIAL LIST (DIMS MAY VARY)

1 PC	11/16" BIRCH PLY	11/16" X 48" X 48"
1 PC	11/16" BIRCH PLY	11/16" X 48" X 46 1/2"
1 PC	11/16" BIRCH PLY	11/16" X 48" X 49 1/2"
1 PC	1/4" BIRCH PLY	1/4" X 48 X 48"
2 PCS	Ⓔ 1/2" PLYWOOD DRW SIDE	1/2" X 6" X 60"
	SOLID WOOD COMPONENTS	
1 PC	Ⓐ PENCIL LEDGE	1 1/2" X 1 1/2" X 30"
1 PC	Ⓑ DOOR STOP	7/16" X 1 5/16" X 30"
2 PCS	Ⓒ DOOR FRAME STOCK	3/4" X 2 1/2" X 48"
1 PC	Ⓓ S4S FRAME STOCK	3/4" X 1 1/2" X 30"
1 PC	Ⓔ PANEL MOULD	3/4" X 1 1/2" X 84"
2 EA	BLUM FULL INSET HINGES	#71B3780
2 EA	BLUM OMM HINGE PLATES	#173H7100
1 PR	BLUM DRAWER GUIDE	#563H5330B
1 PR	BLUM FRONT FIXING CLIPS	#T51.1901.PS (LI & RE)
1 PR	HAFELE NON MORTISE HINGES	351.86.630 SATIN CHROME
16 EA	WOOD SCREW	#8 X 1 1/4"
2 EA	WOOD SCREW	#8 X 1"
16 EA	POCKET SCREW	#8 X 1 1/4"
	1 1/4" BRAD NAILS	
	1" BRAD NAILS	
4 EA	BUMPER PADS	
4 EA	SHELF PINS	5mm
4 EA	HAFELE CONNECTING SCREWS	M6 – USE 8mm DRILL BIT
2 EA	HAFELE CABINET KNOBS	134.45.431 SATIN CHROME

CUT LIST

PART	MATERIAL	QTY	THICK	WIDTH	LENGTH
UPPER END PANELS	BIRCH PLY				
UPPER CABINET TOP	BIRCH PLY				
UPPER CABINET FLOOR	BIRCH PLY				
UPPER CAB. ADJ. SHELF	BIRCH PLY				
UPPER CAB. BACK	BIRCH PLY				
UPPER HANG RAILS	BIRCH PLY				
LOWER END PANELS	BIRCH PLY				
LOWER CABINET TOP	BIRCH PLY				
LOWER CABINET FLOOR	BIRCH PLY				
LOWER FIXED SHELF	BIRCH PLY				
LOWER VERT. DIVIDER	BIRCH PLY				
LOWER DRILL HANG RAIL	BIRCH PLY				
LOWER MID BACK	BIRCH PLY				
LOWER CAB. BACK	BIRCH PLY				
DRAWER FRONT	BIRCH PLY				
ANGLED WRITING TOP	BIRCH PLY				
DOOR STILES	SOLID				
DOOR RAILS	SOLID				
DOOR PANEL	BIRCH PLY				
DRAWER BOX FRONT	RUSSIAN BIRCH				
DRAWER BOX SIDES	RUSSIAN BIRCH				
DRAWER BOX BACK	RUSSIAN BIRCH				
DRAWER BOX BOTTOM	BIRCH PLY				
Ⓐ PENCIL LEDGE	SOLID				
Ⓑ DOOR STOP	SOLID				
Ⓓ S4S FRAME STOCK	SOLID				
Ⓔ PANEL MOULD	SOLID				
Ⓔ PANEL MOULD	SOLID				

2018 SkillsUSA NLSC

DATE: JUNE 2018 SHEET NO: S9

DRAWN BY: RKG SCALE: NA

TITLE: MATERIAL LIST & CUT LIST



CUT LIST

PART	MATERIAL	QTY	THICK	WIDTH	LENGTH
UPPER END PANELS	BIRCH PLY				
UPPER CABINET TOP	BIRCH PLY				
UPPER CABINET FLOOR	BIRCH PLY				
UPPER CAB. ADJ. SHELF	BIRCH PLY				
UPPER CAB. BACK	BIRCH PLY				
UPPER HANG RAILS	BIRCH PLY				
LOWER END PANELS	BIRCH PLY				
LOWER CABINET TOP	BIRCH PLY				
LOWER CABINET FLOOR	BIRCH PLY				
LOWER FIXED SHELF	BIRCH PLY				
LOWER VERT. DIVIDER	BIRCH PLY				
LOWER DRILL HANG RAIL	BIRCH PLY				
LOWER MID BACK	BIRCH PLY				
LOWER CAB. BACK	BIRCH PLY				
DRAWER FRONT	BIRCH PLY				
ANGLED WRITING TOP	BIRCH PLY				
DOOR STILES	SOLID				
DOOR RAILS	SOLID				
DOOR PANEL	BIRCH PLY				
DRAWER BOX FRONT	RUSSIAN BIRCH				
DRAWER BOX SIDES	RUSSIAN BIRCH				
DRAWER BOX BACK	RUSSIAN BIRCH				
DRAWER BOX BOTTOM	BIRCH PLY				
Ⓐ PENCIL LEDGE	SOLID				
Ⓑ DOOR STOP	SOLID				
Ⓓ S4S FRAME STOCK	SOLID				
Ⓔ PANEL MOULD	SOLID				
Ⓕ PANEL MOULD	SOLID				

CONTESTANT # _____

2018 SkillsUSA NLSC

DATE: JUNE 2018 SHEET NO: S10
 DRAWN BY: RKG SCALE: NA
 TITLE: CUT LIST - TURN IN

